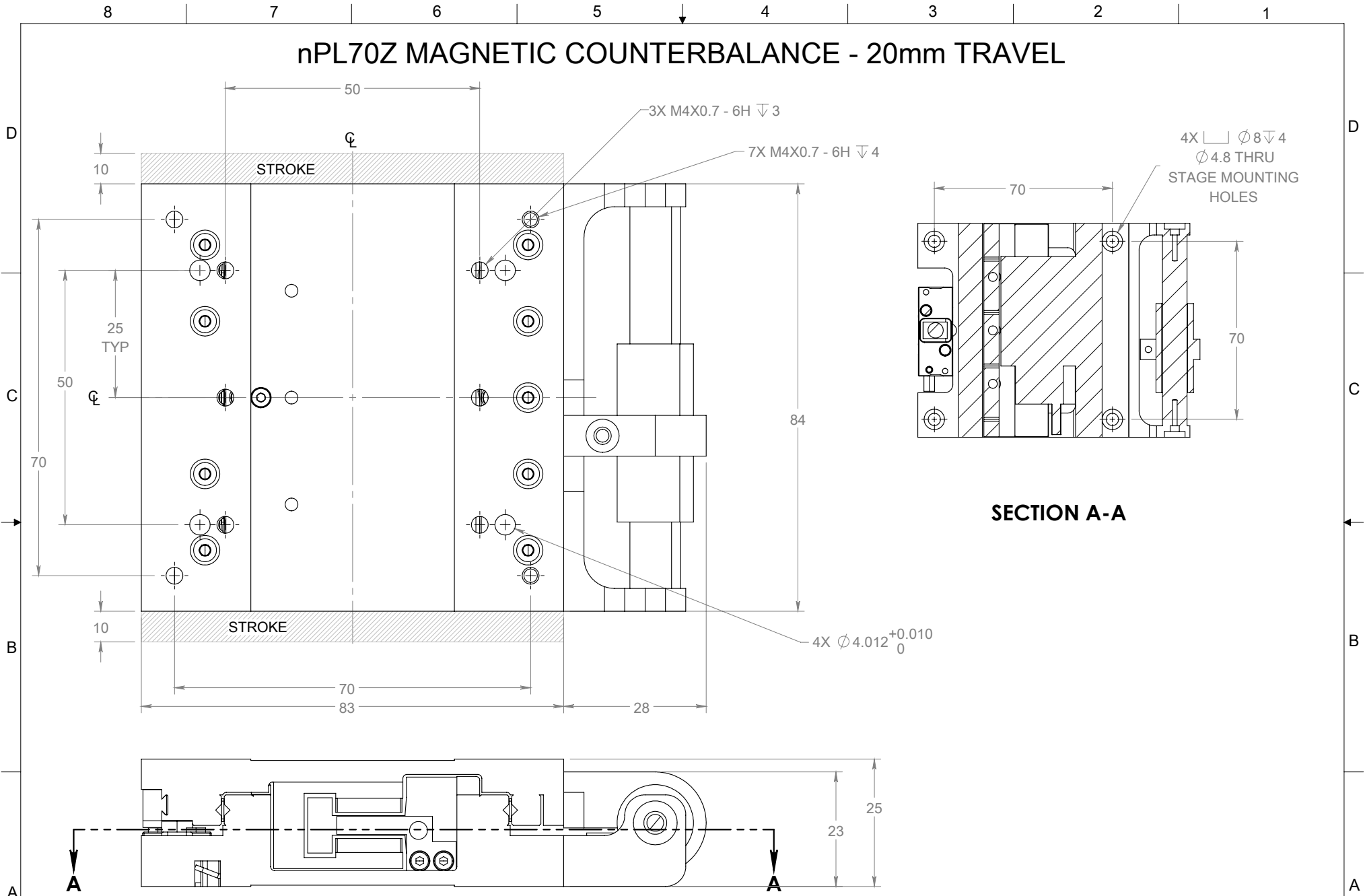



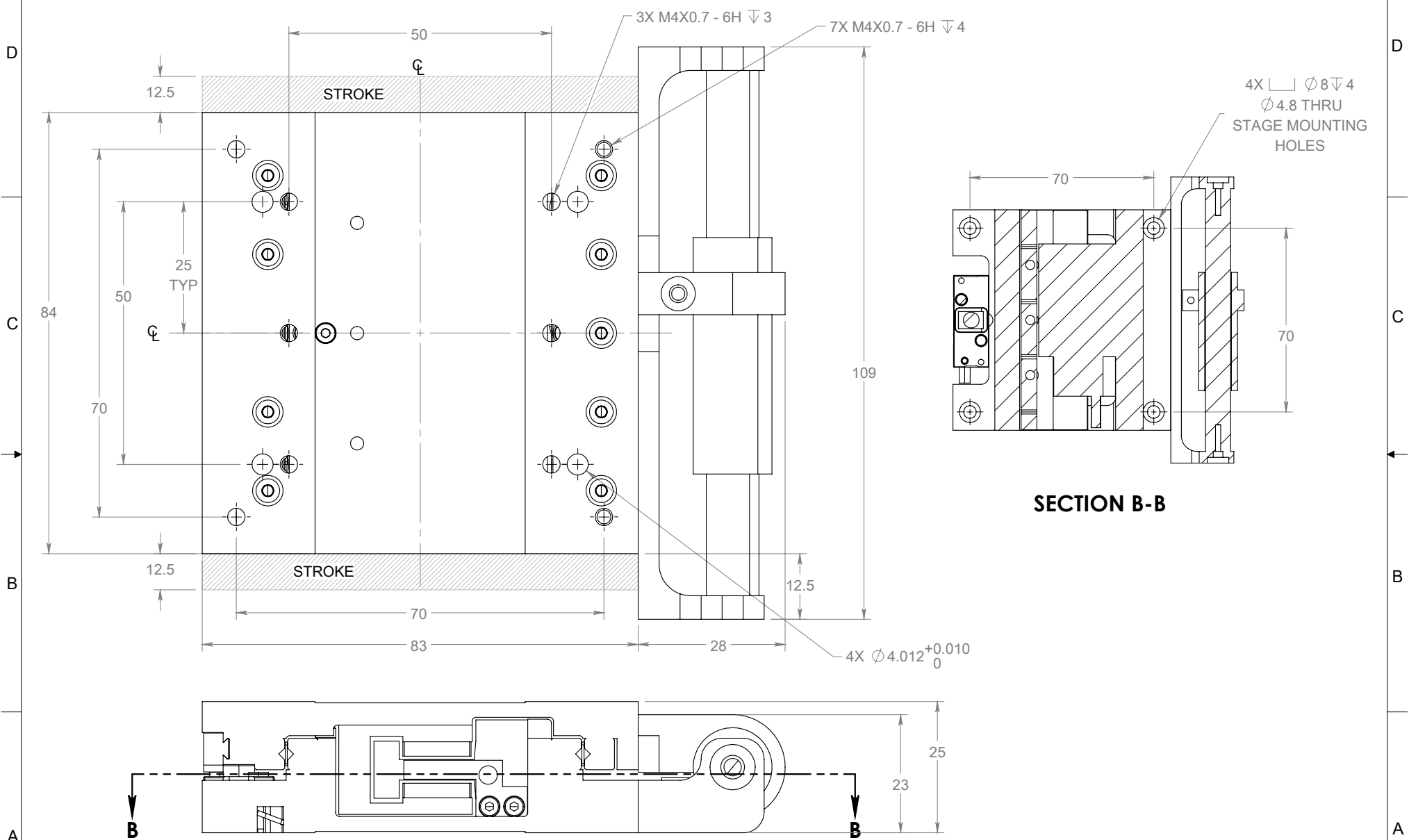





nPL70Z MAGNETIC COUNTERBALANCE - 20mm TRAVEL



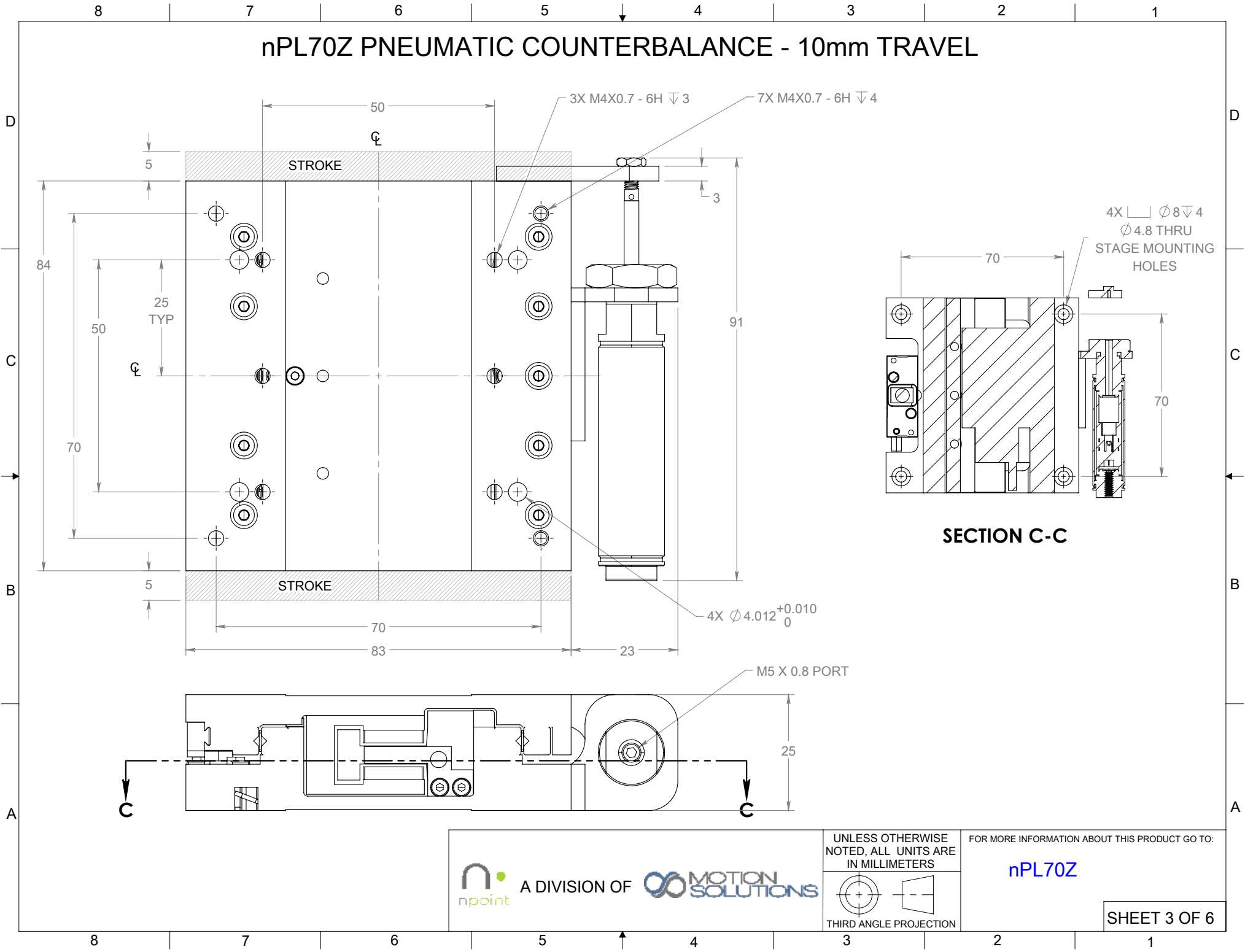
 A DIVISION OF 	UNLESS OTHERWISE NOTED, ALL UNITS ARE IN MILLIMETERS	FOR MORE INFORMATION ABOUT THIS PRODUCT GO TO: nPL70Z
	 THIRD ANGLE PROJECTION	SHEET 1 OF 6



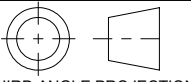
nPL70Z MAGNETIC COUNTERBALANCE - 25mm TRAVEL



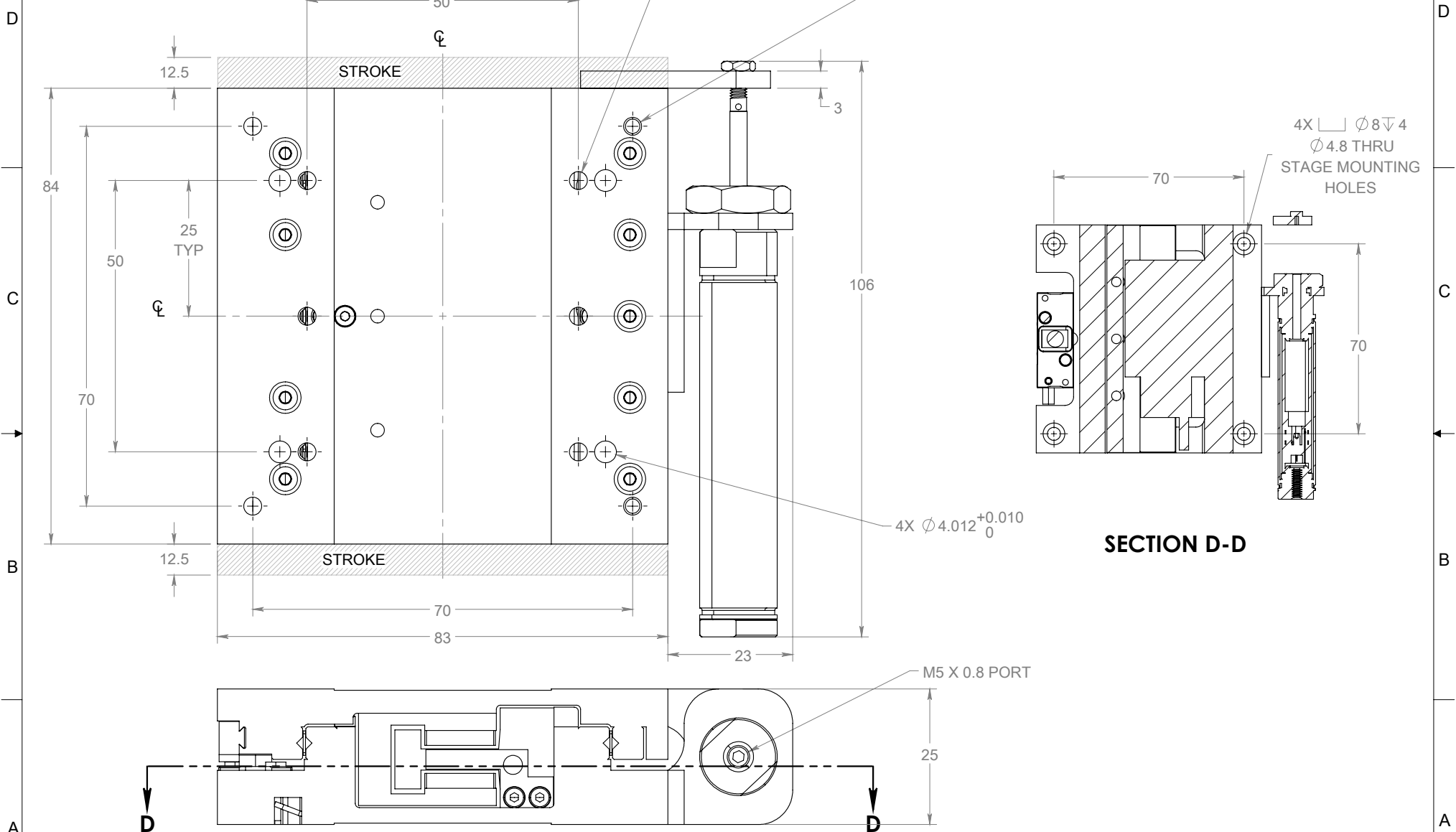
 A DIVISION OF 	UNLESS OTHERWISE NOTED, ALL UNITS ARE IN MILLIMETERS	FOR MORE INFORMATION ABOUT THIS PRODUCT GO TO:
	 THIRD ANGLE PROJECTION	nPL70Z



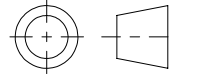
nPL70Z PNEUMATIC COUNTERBALANCE - 10mm TRAVEL



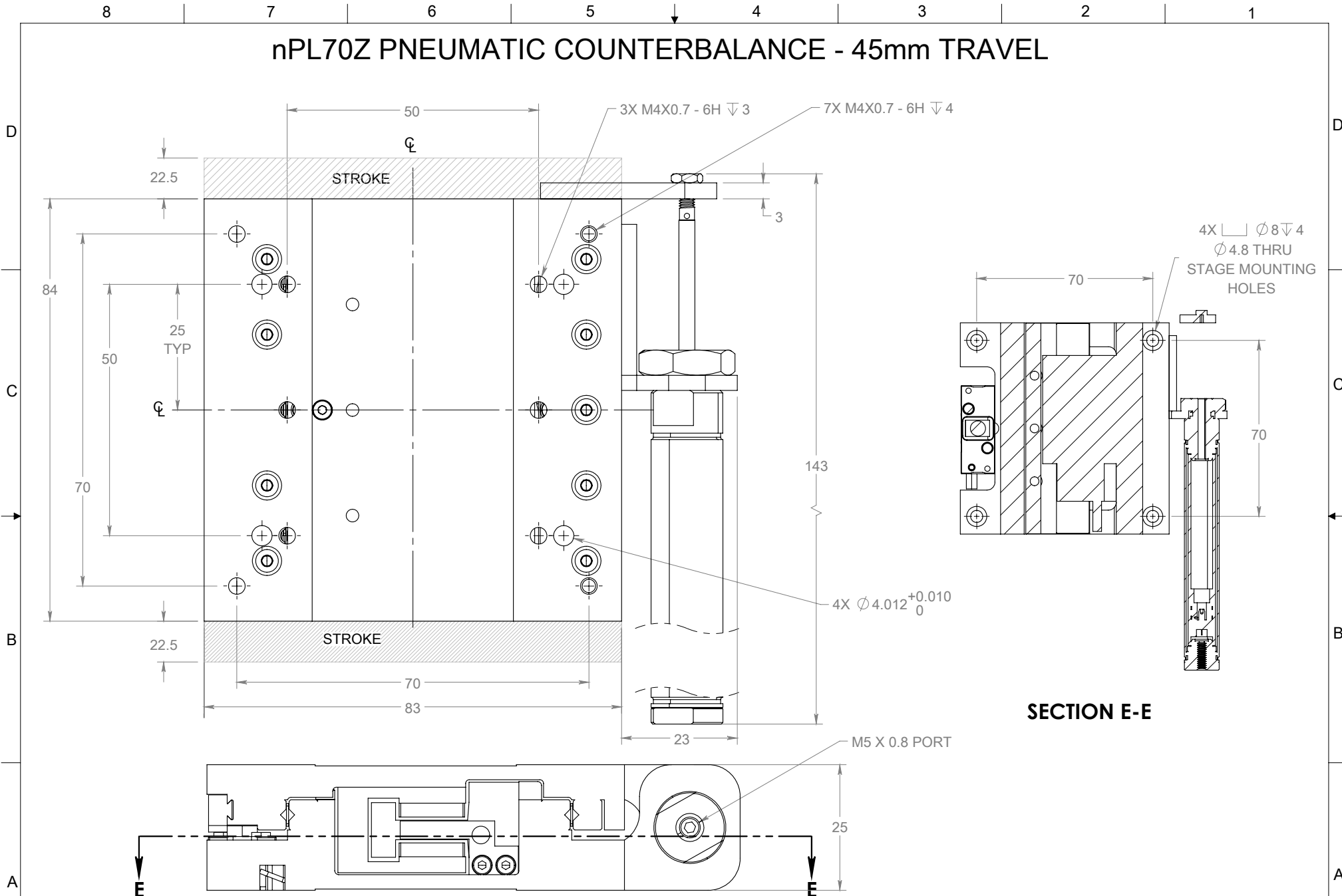
 A DIVISION OF 	UNLESS OTHERWISE NOTED, ALL UNITS ARE IN MILLIMETERS	FOR MORE INFORMATION ABOUT THIS PRODUCT GO TO:
	 THIRD ANGLE PROJECTION	nPL70Z

nPL70Z PNEUMATIC COUNTERBALANCE - 25mm TRAVEL



 A DIVISION OF 	UNLESS OTHERWISE NOTED, ALL UNITS ARE IN MILLIMETERS	FOR MORE INFORMATION ABOUT THIS PRODUCT GO TO: nPL70Z
	 THIRD ANGLE PROJECTION	SHEET 4 OF 6

nPL70Z PNEUMATIC COUNTERBALANCE - 45mm TRAVEL






 A DIVISION OF 	UNLESS OTHERWISE NOTED, ALL UNITS ARE IN MILLIMETERS	FOR MORE INFORMATION ABOUT THIS PRODUCT GO TO: nPL70Z
	 THIRD ANGLE PROJECTION	SHEET 5 OF 6

TABLE 1: ENCODER PINOUTS

DIGITAL OUTPUT			
FUNCTION	SIGNAL	PIN	
POWER	5 VDC	7, 8	
	0 VDC	2, 9	
INCREMENTAL	A	+	14
		-	6
	B	+	13
		-	5
REFERENCE MARK	Z	+	12
		-	4
LIMITS	P	11	
	Q	10	
SET-UP	X	1	
ALARM	E	+	-
		-	3
ANALOG OUTPUT			
FUNCTION	SIGNAL	PIN	
POWER	5 VDC	4, 5	
	0 VDC	12, 13	
INCREMENTAL	COSINE	+	9
		-	1
	SINE	+	10
		-	2
REFERENCE MARK	V ₀	+	3
		-	11
LIMITS	P	7	
	Q	8	
SET-UP	V _x	6	
ALARM	CAL	14	

TABLE 2: POWER CABLE

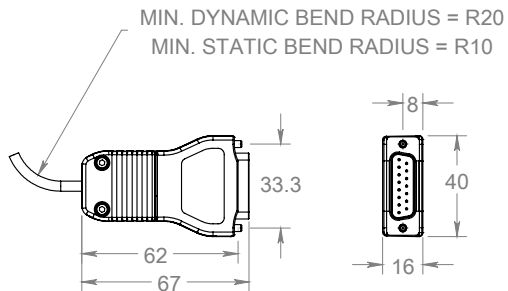
MOTOR POWER CABLE	
DESCRIPTION	COLOR
PHASE U	BROWN
PHASE V	WHITE
PHASE W	GREEN
SHIELD	CABLE SHIELD
CABLE DIAMETER [mm]	4.1
MIN. BEND RADIUS [mm]	41

TABLE 3: HALL SENSOR CABLE

HALL SENSOR CABLE	
DESCRIPTION	COLOR
HA	GREY
HB	YELLOW
HC	BLUE
+5VDC	RED
0VDC	BLACK
CABLE DIAMETER [mm]	3.8
MIN. BEND RADIUS [mm]	38

TABLE 4: VERTICAL COUNTERBALANCE TYPE

TYPE	FORCE [N]	TRAVEL [mm]
MAGNETIC [MV]	3 N, 7 N	20 mm, 25 mm
PNEUMATIC [PV]	UP TO 42 N	UP TO 45 mm




 A DIVISION OF 


 THIRD ANGLE PROJECTION

UNLESS OTHERWISE NOTED, ALL UNITS ARE IN MILLIMETERS

FOR MORE INFORMATION ABOUT THIS PRODUCT GO TO:

[nPL70Z](#)